

# Mounting accessories for cylinders

Mountings in steel for cylinders ISO 15552



## Main features

32 ÷ 320

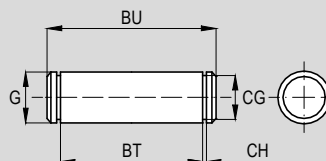


SEC..AQIS+SG

Bores Ø

AA4

Type



## Technical data

Type	Description	Material
SEC..AQIS	Mounting for cylinders in steel. Pin. For rear female clevis ISO MP2. Supplied with two seeger.	Steel AVP

## Dimensions

For cylinder Ø mm	Code	Item	G	BT	CG	CH	BU	Weight (g)
32	040261	SEC032AQIS+SG	10	46	9,6	1,1	53	32
40	040262	SEC040AQIS+SG	12	53	11,5	1,1	60	52
50	040263	SEC050AQIS+SG	12	61	11,5	1,1	68	60
63	040264	SEC063AQIS+SG	16	71	15,2	1,1	78	122
80	040265	SEC080AQIS+SG	16	91	15,2	1,1	98	152
100	040266	SEC100AQIS+SG	20	111	19	1,3	118	290
125	040267	SEC125AQIS+SG	25	132	23,9	1,3	139	530
160	040268	SEC160AQIS+SG	30	171,5	28,6	1,6	178	978
200	040269	SEC200AQIS+SG	30	171,5	28,6	1,6	178	978
250	040270	SEC250AQIS+SG	40	202	37,5	1,85	211	2100
320	040460	SEC320AQIS+SG	45	222	42,5	1,85	236	2950

## Main features

32 ÷ 250

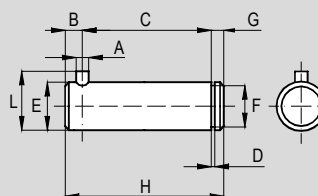


SEC..ARAQIS+SG

Bores Ø

AA6

Type



## Technical data

Type	Description	Material
SEC..ARAQIS	Mounting for cylinders in steel. Anti-rotating pin. For narrow rear female clevis ISO AB6 (for bearing DIN 648K). Supplied with one seeger.	Steel AVP

## Dimensions

For cylinder Ø mm	Code	Item	A	C	D	E	F	G	H	L	B	Weight (g)	
32	040571	SEC032ARAQIS+SG	3	32,5	1,1	10	9,6	4	41	14	4,5	0	26
40	040572	SEC040ARAQIS+SG	4	38	1,1	12	11,5	4	48	16	6		42
50	040573	SEC050ARAQIS+SG	4	43	1,1	16	15,2	5	54	20	6		84
63	040574	SEC063ARAQIS+SG	4	49	1,1	16	15,2	5	60	20	6		94
80	040575	SEC080ARAQIS+SG	4	63	1,3	20	19	6	75	24	6		184
100	040576	SEC100ARAQIS+SG	4	73	1,3	20	19	6	85	24	6	208	
125	040577	SEC125ARAQIS+SG	6	94	1,6	30	28,6	7	110	36	9	606	
160	040578	SEC160ARAQIS+SG	6	119	1,6	35	33	7	135	41	9	972	
200	040579	SEC200ARAQIS+SG	6	119	1,6	35	33	7	135	41	9	972	
250	040600	SEC250ARAQIS+SG	8	121	1,85	40	37,5	7	140	48	12	1365	