



Monoblock Directional Control Valve RM 230

Key valve features

RM 230 light is a monoblock valve, designed for max. operating pressures up to 3,000 psi (210 bar) and typ. pump flows up to 20 gpm (70 Lpm).

It is available with 1 to 4 sections per valve.

It is designed with an open center for fixed displacement pumps.

The valve can be operated manually, with cable or by pneumatic, electro-pneumatic and hydraulic remote control.

The valve offers excellent operating characteristics because of the specially designed spools for different applications.

Low and uniform spool forces are the result of careful balancing of the flow forces.

Applications

Typical applications for RM 230 light are roll off trucks, cranes, refuse trucks and agricultural vehicles.

Further properties and possibilities

- There are many configurations of spools and spool controls which make the valve suitable for a wide range of applications
- Two or more blocks can be connected in series

Technical data

Pressures / Flows

Max. operating pressure per port:

| | | |
|---------------|-----------|---------|
| P1, P2, A, B: | 3,000 psi | 210 bar |
|---------------|-----------|---------|

| | | |
|---------|---------|--------|
| T1, T2: | 290 psi | 20 bar |
|---------|---------|--------|

| | | |
|-----------------------------|--------|--------|
| Typical Nominal Inlet Flow: | 20 gpm | 75 Lpm |
|-----------------------------|--------|--------|

| | | |
|--------------------------|-----------------|-------------------|
| Fluid temperature range: | 5°F up to 176°F | -15°C up to +80°C |
|--------------------------|-----------------|-------------------|

Further data

Spool stroke:

| | | |
|----------|-----------|--------|
| Nominal: | ± 0.25 in | ± 6 mm |
|----------|-----------|--------|

| | | |
|---------------|--------|--------|
| 4th position: | 0.5 in | +12 mm |
|---------------|--------|--------|

Spool control force spool control 9:

| | | |
|-------------------|----------|-------|
| Neutral position: | 24.5 lbs | 110 N |
|-------------------|----------|-------|

| | | |
|--------------------|----------|-------|
| Max. spool stroke: | 31.5 lbs | 140 N |
|--------------------|----------|-------|

| | | |
|------------|-----------|--------|
| Detent in: | >67.4 lbs | >300 N |
|------------|-----------|--------|

| | | |
|-------------|-----------|--------|
| Detent out: | <22.5 lbs | <100 N |
|-------------|-----------|--------|

Permissible contamination level: Equal or better than 20/18/14 as per ISO 4406

Viscosity range: 10 – 400 mm²/s (cst) Higher viscosity allowed at start up

Leakage A, B -> T at 1,500 psi, 32 cSt and 104°F ≤ 13 cc/min (100 bar, 32 cSt and 40°C)

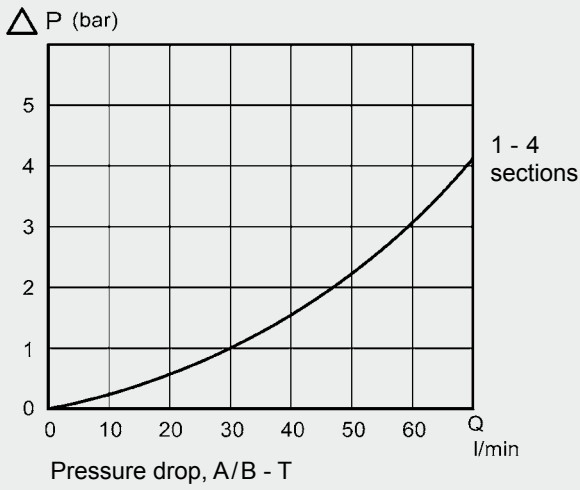
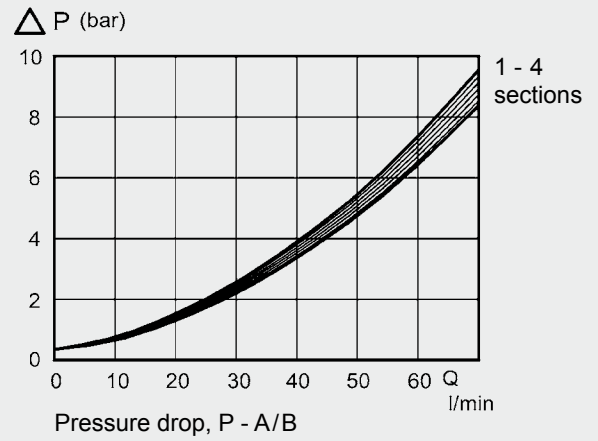
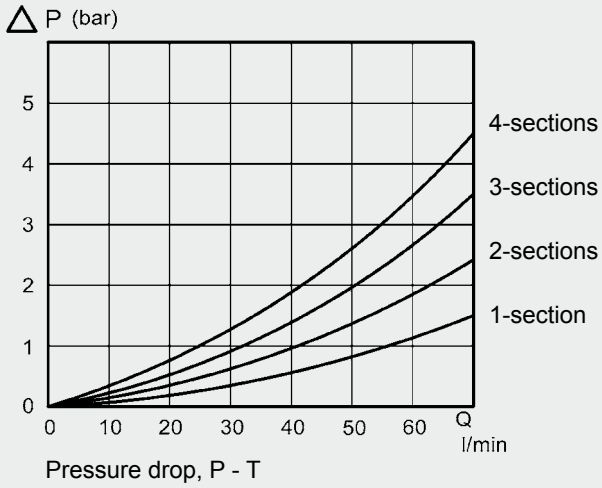
Pressure fluid: Mineral oil and synthetic oil based on mineral oil HL, HLP according to din 51524

Higher values are possible, depending on application. For applications with demands that exceed stated data above, please contact us for consideration.

MTTFd value after consultation with HYDAC.

Pressure drop

Oil temperature / viscosity for all graphs: +104°F (+40°C) / 32 cSt



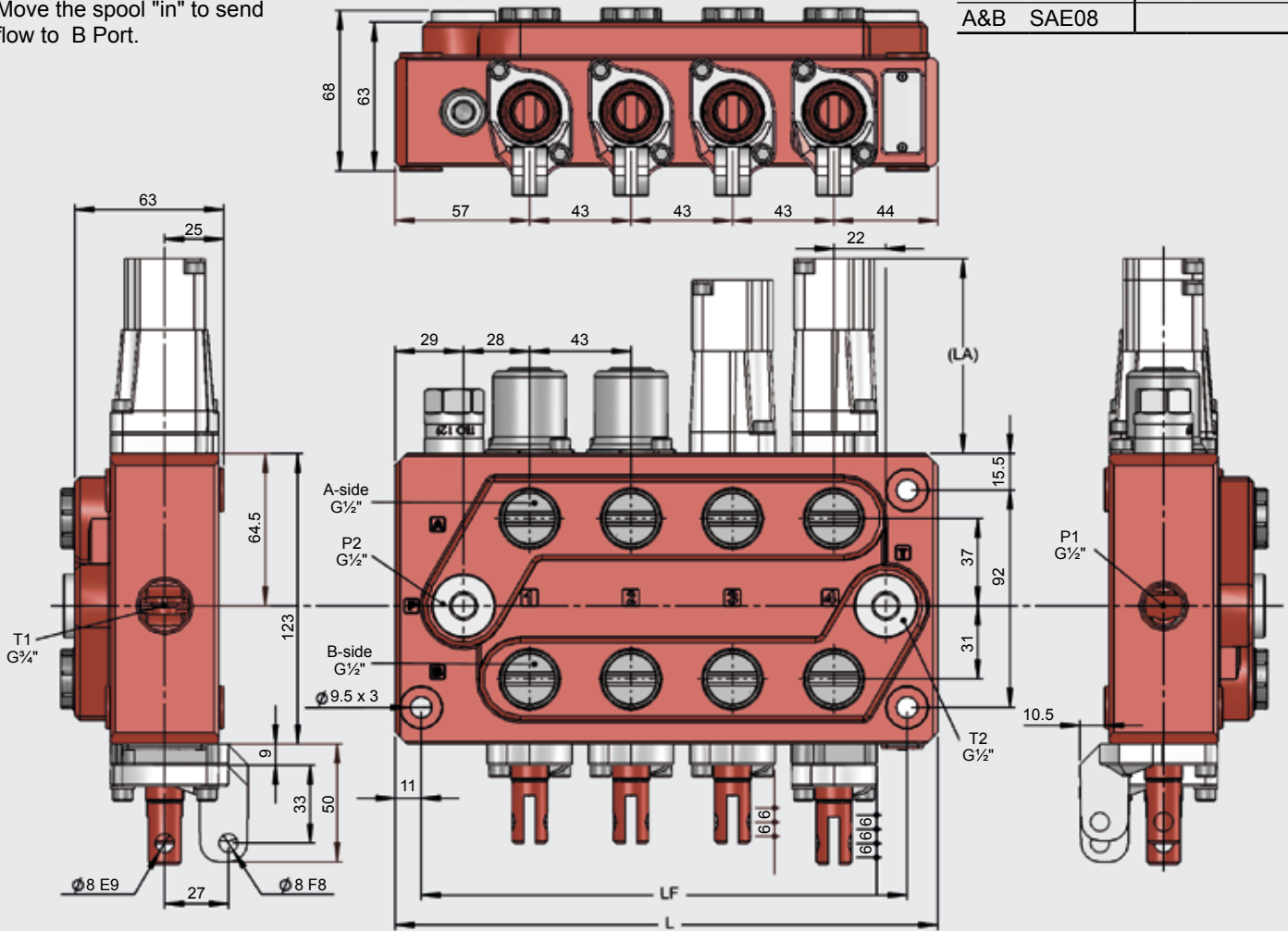
Dimensions and weight

SAE ports are shown in the table.

Move the spool "in" to send flow to B Port.

Port Sizes for US Models

| | | | |
|-----|-------|----|-------|
| P1 | SAE10 | P2 | SAE08 |
| T1 | SAE12 | T2 | SAE08 |
| A&B | SAE08 | | |



| Weights | Complete Valve | |
|------------|----------------|-------|
| 1 section | 8.8 lbs | 4 kg |
| 2 sections | 15.4 lbs | 7 kg |
| 3 sections | 19.8 lbs | 9 kg |
| 4 sections | 24.2 lbs | 11 kg |

| Measurements | L (in) | L (mm) | LF (in) | LF (mm) |
|--------------|--------|--------|---------|---------|
| 1 section | 4.0 | 101 | 3.0 | 77 |
| 2 sections | 5.7 | 144 | 4.7 | 120 |
| 3 sections | 7.4 | 187 | 6.4 | 163 |
| 4 sections | 9.1 | 230 | 8.1 | 206 |



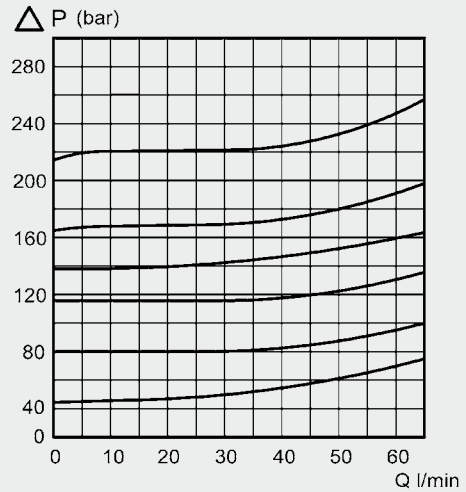
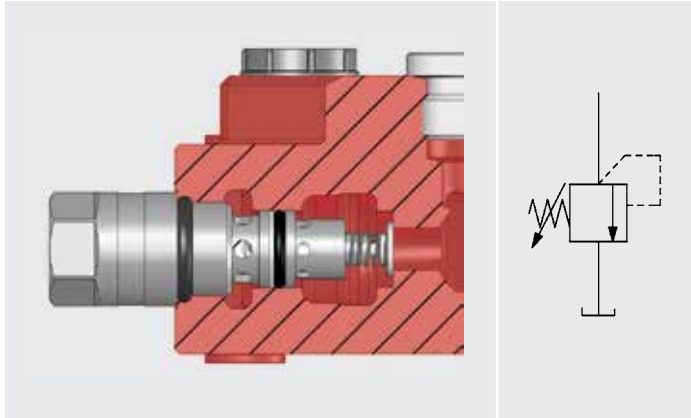
| Type | LA (in) | LA (mm) | Type | LB (in) | LB (mm) |
|---------|---------|---------|------|---------|---------|
| 9 | 1.4 | 36.5 | M19 | 1.6 | 41 |
| 9M | 2.8 | 70 | M211 | 2.0 | 50 |
| 9W | 3.4 | 85.5 | MM | 3.5 | 88 |
| 10 | 2.9 | 73 | 3W | 3.3 | 85 |
| 11 | 3.3 | 83 | 4W | 3.7 | 94 |
| 13 | 2.9 | 73 | HPD | 2.8 | 70 |
| 14 | 2.9 | 73 | HPDM | 3.5 | 88 |
| P | 4.1 | 103 | M2K | 12.2 | 310 |
| EP | 4.1 | 103 | | | |
| HPD | 2.8 | 70 | | | |
| L61-L63 | 3.9 | 98.5 | | | |
| L64 | 3.9 | 100 | | | |

Main relief valve

Main relief valve TBD129

The TBD129 is a differential area, direct acting relief valve for the main circuit. The valve is combined with the A-side load check valve.

- Adjustable and sealable
- Setting range: 500-3,000 psi (35-210 bar)
- Setting range step: 100 psi (7 bar)



Spool controls – A-Side

Spool Control 9

9 Spring centering, 9M marine version, 9W for cable control



Spool Control 10

Detents at positions 1, 2 and 3



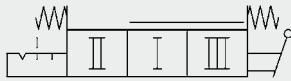
Spool Control 11

Spring centering with detent at position 4



Spool Control 13

Spring centering with detent at position 2



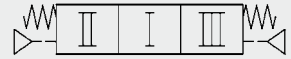
Spool Control 14

Spring centering with detent at position 3



Spool Control P

Pneumatic*



Spool Control EP

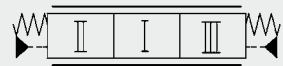
Electro / pneumatic on / off**



Spool Control HPD

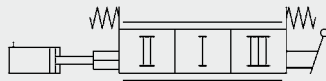
Hydr. proportional Pilot pressure 85 - 230 psi (6-16 bar)

Max. pilot pressure 360 psi (25 bar)



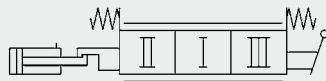
Spool Control L61

External hydraulic kick-out from inserted spool***



Spool Control L62

External hydraulic kick-out from extended spool***



Spool Control L63

External hydraulic kick-out from inserted and extended spool***



Spool Control L64

External hydraulic kick-out from inserted and extended spool, locking neutral position***



Spool Control HLS 200

Spool position indicator.



* Connection 1/8" BSP

** Power consumption 4.8 W

Rated voltage 24 V

Max voltage variation +/- 10 %

Duty factor 100 %

Connection according to EN175301-803/B

Protection class IP65

*** Connection 1/4" BSP

Spool controls – B-Side

Bracket M19

Bracket for 3-position spool

Bracket M2

Bracket for 3-position spool, without ear

Bracket M29

Bracket for 4-position spool

3W

Cap for 3-position spool controlled by cable

Bracket M111

Bracket for 3-position spool, gear ratio 11:1

4W

Cap for 4-position spool controlled by cable

Bracket M211

Bracket for 4-position spool, gear ratio 11:1

Lever M2K250

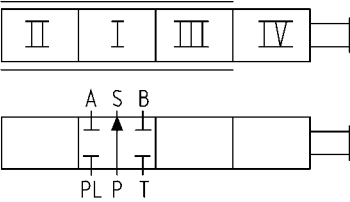
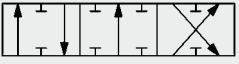
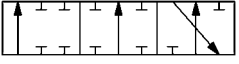
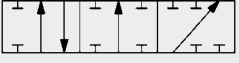
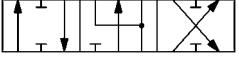
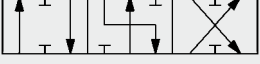
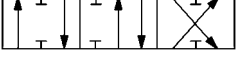
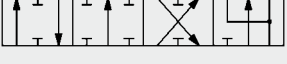
Coordinate lever for spool with 3 or 4 pos.

Spools

Generally the spools are divided in 3 different flow ranges.

The letter indicating flow ranges is replaced by X. D = 5 - 8 gpm, K = 8 - 13 gpm, Q = >13 gpm.

In the table only the accessibility of different functions are shown.

|  | <p>Spools for general use</p> <p>Function</p> | <p>Code</p> |
|--|---|--------------------|
|  | Double acting spool | 1X |
|  | Single acting spool P - A | 2X |
|  | Single acting spool P - B | 2XB |
|  | Motor spool | 4X |
|  | Motor spool A - T | 4XA |
|  | Motor spool B - T | 4XB |
|  | Double acting spool with 4th pos. for float | 3X |

The RM 230 spools are available in a variety of flows and styles to accommodate most design requirements.

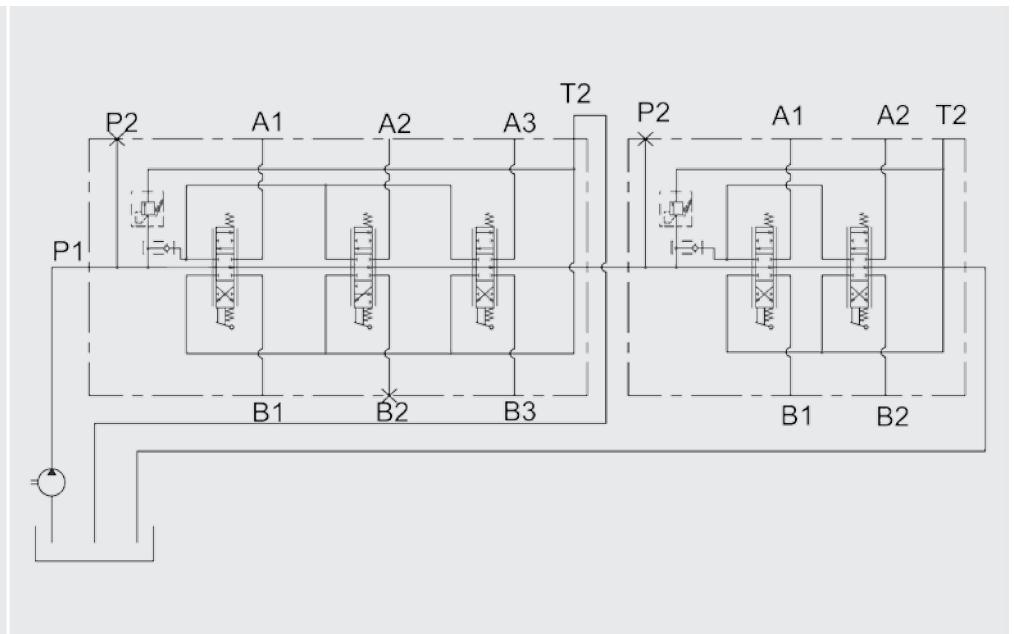
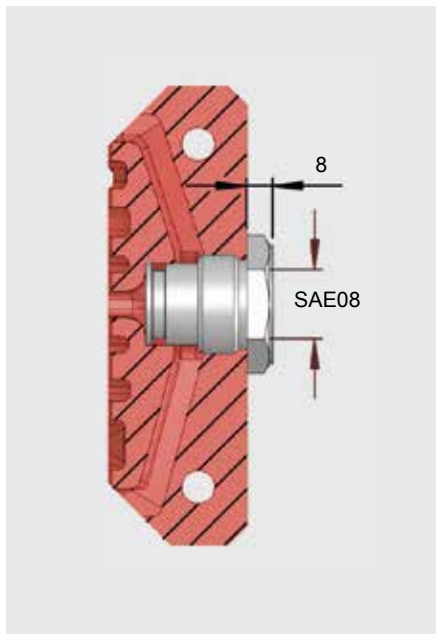
Since the development of spools is a continuous process and all available spools are not described in this data sheet, contact HYDAC for advice on choosing spools in order to optimize your valve configuration.

High pressure carry-over

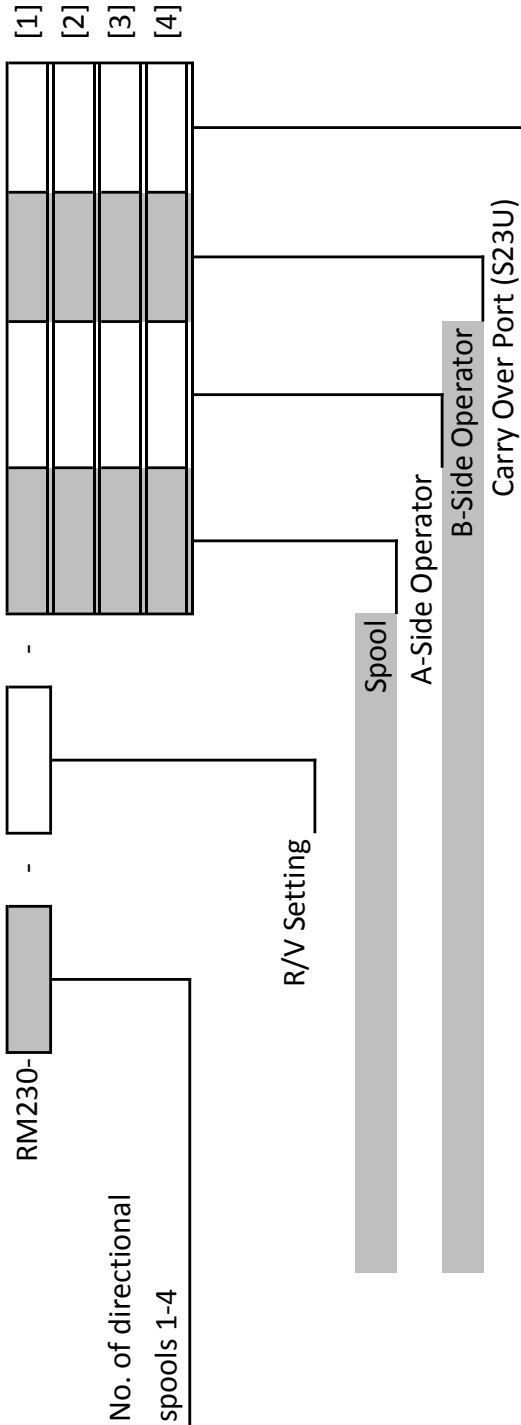
High pressure carry-over nipple SU23

The type SU23 series nipple is used for series mounting of valve blocks when pipe or hose is used between the blocks.

When the high pressure carry-over nipple SU23 is used for series mounting, tank connection T2 for the first valve must always be connected to the tank (see diagram). Valve blocks connected in series give priority of flow to the first block in the series. This means that there will be no flow at block 2 if block 1 is fully activated.



Ordering Details RM230 Sectional Control Valve



No. of directional spools 1-4

Application Information

- OEM:
- Machine Type:
- Pump Type:
- Pump Flow:
- System Pressure:



Global Head Office
HYDAC INTERNATIONAL
GMBH

Industriegebiet
D – 66280 Sulzbach/Saar
Germany

Tel.: +49 6897 509-01

Fax: +49 6897 509-577

Internet: www.hydac.com
Email: info@hydac.com

HYDAC North America Locations**USA**www.HYDACusa.com**HYDAC TECHNOLOGY CORPORATION
Filter Division**

2260 City Line Road
Bethlehem, PA 18017

+1.610.266.0100

**HYDAC TECHNOLOGY CORPORATION
Accessory Division**

2204 Avenue C
Bethlehem, PA 18017

+1.610.266.0100

**HYDAC TECHNOLOGY CORPORATION
Electronic Division
Process Filter Division****HYDAC CORPORATION
Accumulator Division**

90 Southland Drive
Bethlehem, PA 18017

+1.610.266.0100

**HYDAC TECHNOLOGY CORPORATION
Cooling System Division**

445 Windy Point Drive
Glendale Heights, IL 60139

+1.630.545.0800

**HYDAC TECHNOLOGY CORPORATION
Hydraulic Division - Compact Hydraulics**

450 Windy Point Drive
Glendale Heights, IL 60139

1749 Paul Avenue
Glendale Heights, IL 60139

+1.630.545.0800

**HYDAC TECHNOLOGY CORPORATION
Mobile Hydraulic Division**

1660 Enterprise Parkway • Suite E
Wooster, OH 44691

+1.610.266.0100

**HYDAC TECHNOLOGY CORPORATION
Cooling System Division**

1051 Airlie Parkway
Denver, NC 28037

+1.610.266.0100 x1805

HYDAC Cylinders LLC

540 Carson Road North
Birmingham, AL 35217

+1.205.520.1220

**HYDAC TECHNOLOGY CORPORATION
HYDAC CORPORATION
Sales Office & Operations**

1718 Fry Road, Suite 100
Houston, TX 77084

+1.281.579.8100

**HYDAC TECHNOLOGY CORPORATION
HYDAC CORPORATION
NE Sales Office**

1660 Enterprise Parkway • Suite E
Wooster, OH 44691

+1.610.266.0100

**HYDAC TECHNOLOGY CORPORATION
HYDAC CORPORATION
SE Sales Office**

1051 Airlie Parkway
Denver, NC 28037

+1.610.266.0100 x1805

**HYDAC TECHNOLOGY CORPORATION
HYDAC CORPORATION
NW Sales Office**

1201 NE 144th Street
Suite 111

Vancouver, WA 98682

+1.610.266.0100

Canadawww.HYDAC.ca**HYDAC CORPORATION**

14 Federal Road
Welland, Ontario, Canada L3B 3P2

+1.905.714.9322

**HYDAC CORPORATION
Sales Office**

Montreal, Québec, Canada J2M 1K9

+1.877.539.3388

**HYDAC CORPORATION
Sales Office**

101 - 18207 114 AVE W
Edmonton, Alberta, Canada T5S 2P6

+1.780.484.4228

Mexicowww.HYDACmex.com**HYDAC INTERNATIONAL SA DE CV**

Calle Alfredo A. Nobel #35
Colonia Industrial Los Reyes
Tlalnepantla, CP. 54075
Edo. de Mexico

+011.52.55.47771262

Note

The information in this brochure relates to the operating conditions and applications described.

For applications or operating conditions not described, please contact the relevant technical department.

Subject to technical modifications.