

Main features

Version	Code	Item	Symbol
M5	030806	7VSR	
1/8"	030801	1VSR	
1/4"	030802	2VSR	
3/8"	030803	3VSR	
1/2"	030804	4VSR	
3/4"	030805	5VSR	
3/4" maxi	030807	5VSRM	
1" maxi	030808	6VSRM	



Technical data

Version	Quick exhaust valves series VSR							
Code	030806	030801	030802	030803	030804	030805	030807	030808
Item	7VSR	1VSR	2VSR	3VSR	4VSR	5VSR	5VSRM	6VSRM
Size	M5	1/8"	1/4"	3/8"	1/2"	3/4"	3/4"	1"
Fluid	Filtered compressed air with or without lubrication							
Pressure range	1 ÷ 10 bar							
Temperature range	-20°C ÷ +70°C (standard)		-10°C ÷ +150°C (V)					
Orifice	4 mm	6 mm	8,5 mm		15 mm	18 mm	24 mm	
Flow from P to A (at 6 bar)*	310 NI/min.	1.170 NI/min.	3.200 NI/min.	3.600 NI/min.	5.900 NI/min.	3.100 NI/min.	-	
Flow from A to R (at 6 bar)*	310 NI/min.	1.400 NI/min.	3.300 NI/min.	3.780 NI/min.	7.500 NI/min.	6.300 NI/min.	-	
Mounting	Preferably directly on the cylinder port							

\* At 3 bar for size 3/4"

Standard materials

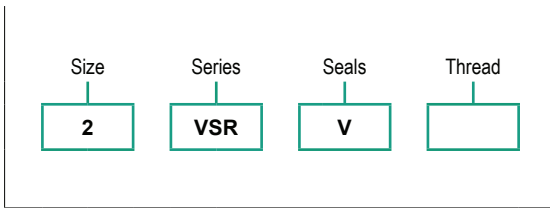
Description	Material							
	7VSR	1VSR	2VSR	3VSR	4VSR	5VSR	5VSRM	6VSRM
Body	Nickel-plated brass							
Diaphragm	NBR	PU						
Washer	Hytrel 55 D							

For spare parts see page 2.260.2

Code key

Size	Series	Seals option	Thread option									
<b>2</b>	<b>VSR</b>	<b>V</b>	●									
<table border="1"> <tr><td>7 = M5</td></tr> <tr><td>1 = 1/8"</td></tr> <tr><td>2 = 1/4"</td></tr> <tr><td>3 = 3/8"</td></tr> <tr><td>4 = 1/2"</td></tr> <tr><td>5 = 3/4"</td></tr> <tr><td>6 = 1"</td></tr> </table>	7 = M5	1 = 1/8"	2 = 1/4"	3 = 3/8"	4 = 1/2"	5 = 3/4"	6 = 1"	<table border="1"> <tr><td>VSR <sup>(1)</sup></td></tr> <tr><td>VSRM <sup>(2)</sup></td></tr> </table>	VSR <sup>(1)</sup>	VSRM <sup>(2)</sup>	V = FKM (-10°C ÷ +150°C)	NPT = NPT threaded
7 = M5												
1 = 1/8"												
2 = 1/4"												
3 = 3/8"												
4 = 1/2"												
5 = 3/4"												
6 = 1"												
VSR <sup>(1)</sup>												
VSRM <sup>(2)</sup>												

How to order



Notes

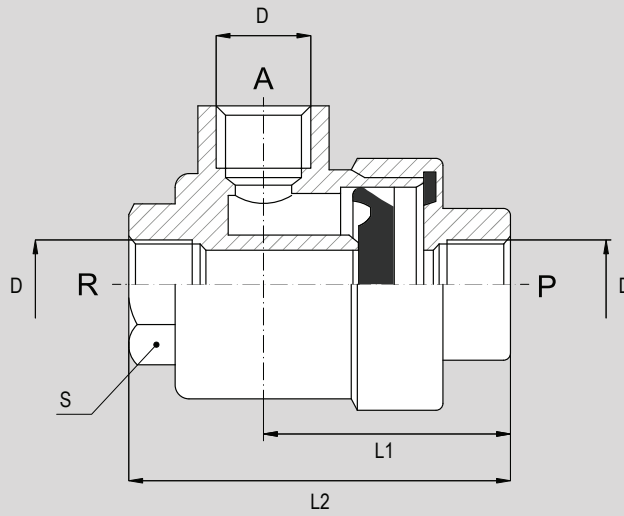
For standard materials see table at page 2.260.1  
Options in the same grid are alternative to each others.  
(1) Series VSR available from size M5 (7) up to size 3/4" (5).  
(2) Series VSR Maxi (VSRM) available only for sizes 3/4" (5) e 1" (6).

Spare parts kits

Valve code	Valve item	Valve size	PU diaphragm code	FKM diaphragm code	Washer code	PU seals kit code	FKM seals kit code
030806	7VSR	M5	030906	-	030913	-	-
030801	1VSR	1/8"	030901	030909	038018	038061	038062
030802	2VSR	1/4"	030902	030903	038019	038063	038064
030803	3VSR	3/8"	030902	030903	038019	038063	038064
030804	4VSR	1/2"	030904	030910	038020	038065	038066
030805	5VSR	3/4"	030905	030908	038021	038067	038068
030807	5VSRM	3/4"	030907	030911	038026	038069	038070
030808	6VSRM	1"	030907	030911	038026	038069	038070

Standard dimensions

Type: **VSR**  
**VSRM**



Code	Item	Size	D	L1	L2	S
030806	7VSR	M5	M5	17	25	10
030801	1VSR	1/8"	1/8"	30	46	14
030802	2VSR	1/4"	1/4"	35	53	17
030803	3VSR	3/8"	3/8"	37	57	21
030804	4VSR	1/2"	1/2"	45	73	26
030805	5VSR	3/4"	3/4"	55	90	32
030807	5VSRM	3/4"	3/4"	71	110	46
030808	6VSRM	1"	1"	71	110	46

Important note

The valve must be directly mounted on the port of the cylinder to achieve the maximum possible speed. When the supply is in **P** the diaphragm closes the exhaust **R** and so the air flows through **A** into the chamber of the cylinder. When the supply **P** fails the diaphragm get back in its original position (closing **P**) due to the exhaust air from **A** to **R**. The noise of the exhaust **R** can be reduced by a silencer (for silencers see from page 4.150.1)