

SERIES 160.VS

coupling, Article: O1A60

Reference Number: 160.VS.KVZS.IG014.SZV

Nominal width 5.0 mm, material: steel, surface: zinc-plated, single shut off, connection type: female thread DIN228/1 (BSP), connection size: 1/4, seal: FPM (Viton)

Technique: Two-hand coupling with 2-point bolt locking. Single piece coupling body with connection - ideal for absorbing significant bending and torsion forces. Positive connection between coupling and plug. Counter nut prevents the connection from being opened unintentionally.

Technical Characteristics: Coupling body, sleeve and locking nut are made from steel zinc plated. Valve brass. Spring and circlip stainless steel AISI 301. Bolts stainless steel AISI 316. Seals made from material FPM (Viton). Plug: steel zinc plated

Note: Please refer to the relevant **product information** for our items.

You can find more information about our product at:

www.steinconnector.com/shop/detail/e29668d9db4042fca5f14c82812ed8e3

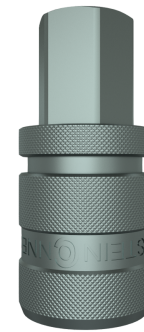
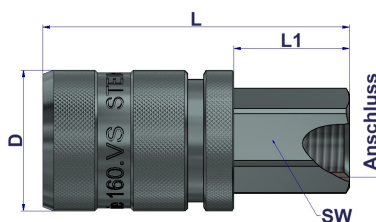


Image similar to the original

Technical Characteristics

Series	160	Connection Size	female thread DIN228/1 (BSP)
Nominal Width	5 mm	Connection Type	1/4
Key	hexagonal	Operating Temperature	from -20 °C to 200 °C
Type	coupling	Pressure Range max.	35 bar
Valve	single shut off	Flow Rate	910 l/min
Seal	FPM (Viton)	Handling	Two-hand coupling
Surface	zinc-plated	Vacuum suitable 0.95 bar	Yes
Material	steel		

Dimensions / Details



Connection	1/4
Ø (Diameter inside)	5 mm
D (Diameter outside)	26 mm
L (length)	54 mm
L1 (length)	23 mm
SW (key width)	17 mm