

Main features

Type	Description
RY	Collectors with outlets on one side.



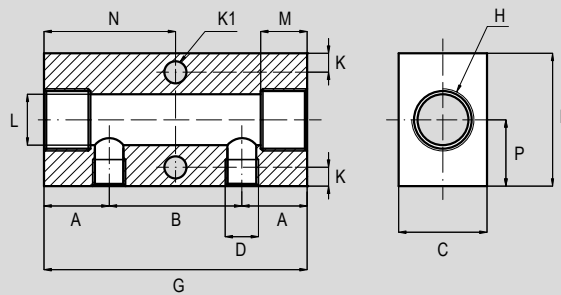
Technical data

Type	RY									
Fluid	Compressed air and other fluids									
Connections (inlet)	1/4"					3/8"				
Connections (outlet)	1/8"					1/4"				
Side outlets number	2	3	4	5	6	3	4	5	6	6
Pressure range	Always higher than the ones used in pneumatic installations									
Parallel threads	UNI - ISO 228 / 1 (BSP)									

Standard materials

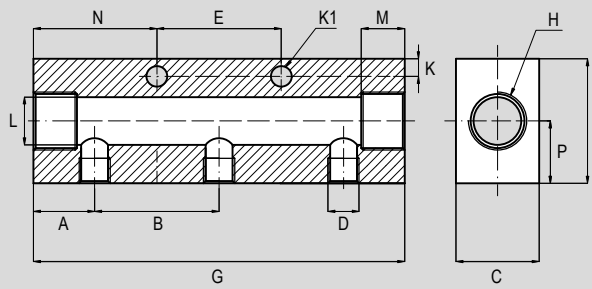
Type	RY
Body	Anodized aluminium

Dimensions



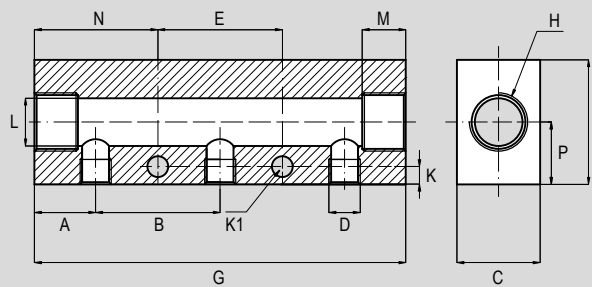
Code	Item	N° side outlets	A	B	C	D	F	G	H	K	K1	L	M	N	P	Weight (g)
024529	RY9	2	15	30	20	G1/8"	30	60	G1/4"	6	6,5	10	9,5	30	15	-

Dimensions



Code	Item	N° side outlets	A	B	C	D	E	F	G	H	K	K1	L	M	N	P	Weight (g)
024521	RY1	3	15	30	20	G1/8"	30	30	90	G1/4"	5	5,5	10	9,5	30	15	-
024522	RY2	4	15	30	20	G1/8"	60	30	120	G1/4"	5	5,5	10	9,5	30	15	-
024523	RY3	5	15	30	20	G1/8"	90	30	150	G1/4"	5	5,5	10	9,5	30	15	-
024524	RY4	6	15	30	20	G1/8"	120	30	180	G1/4"	5	5,5	10	9,5	30	15	-

Dimensions



Code	Item	N° side outlets	A	B	C	D	E	F	G	H	K	K1	L	M	N	P	Weight (g)
024525	RY5	3	18	36	20	G1/4"	36	30	108	G3/8"	6	6,5	12	10,5	36	19	-
024526	RY6	4	18	36	20	G1/4"	72	30	144	G3/8"	6	6,5	12	10,5	36	19	-
024527	RY7	5	18	36	20	G1/4"	108	30	180	G3/8"	6	6,5	12	10,5	36	19	-
024528	RY8	6	18	36	20	G1/4"	144	30	216	G3/8"	6	6,5	12	10,5	36	19	-