

# Mounting accessories for cylinders

Mountings in steel for cylinders ISO 6432



## Main features

8 ÷ 25

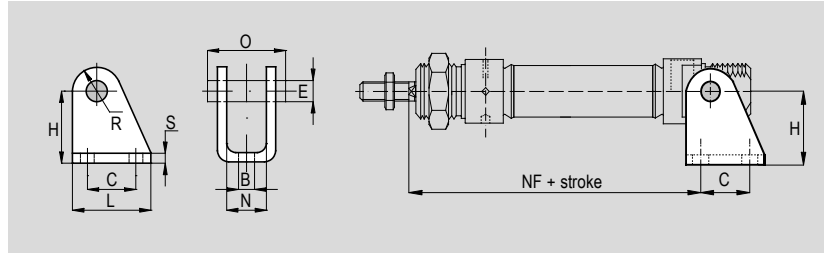
Bores Ø



MP3

CF

Type



## Technical data

Type	Description	Material	Treatment
CF..+P	Mounting for cylinders in steel. Rear clevis. Supplied with pin and two seeger.	Zinc plated steel	White zinc plating

## Dimensions

For cylinder Ø mm	Code	Item	B	E	C	H	L	N	O	R	S	NF	Weight (g)
8	040048	CF08-10+P	4,5	4	12,5	24	20	8,1	17	5	2,5	62,5	42
10													
12	040049	CF12-16+P	5,5	6	15	27	25	12,1	23	7	3	73	75
16												80	
20	040050	CF20-25+P	6,6	8	20	30	32	16,1	29,5	10	4	91	78
25												100	

## Main features

8 ÷ 25

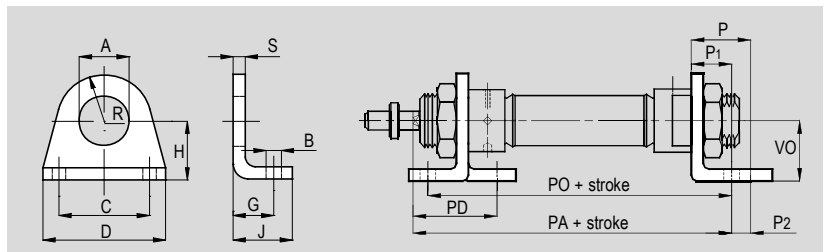
Bores Ø



MS3

P

Type



## Technical data

Type	Description	Material	Treatment
P..	Mounting for cylinders in steel. High foot. For rear or front mounting (head nut required. One head nut supplied with cylinders as standard). Supplied individually.	Zinc plated steel	White zinc plating

## Dimensions

For cylinder Ø mm	Code	Item	A	B	C	D	G	H	J	R	S	PD	PO	PA	P	P <sub>1</sub>	P <sub>2</sub>	VO	Weight (g)
8	040021	P08-10	12	4,5	25	35	11	16	16	10	3	24	68	73	16	11	5	16	29
10																			
12	040022	P12-16	16	5,5	32	42	14	20	20	12,5	4	32	78	87	20	14	6	20	33
16													86	94					
20	040023	P20-25	22	6,6	40	54	17	25	25	20	5	36	93	100	25	17	8	25	41
25																			