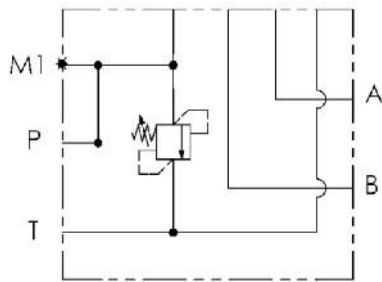
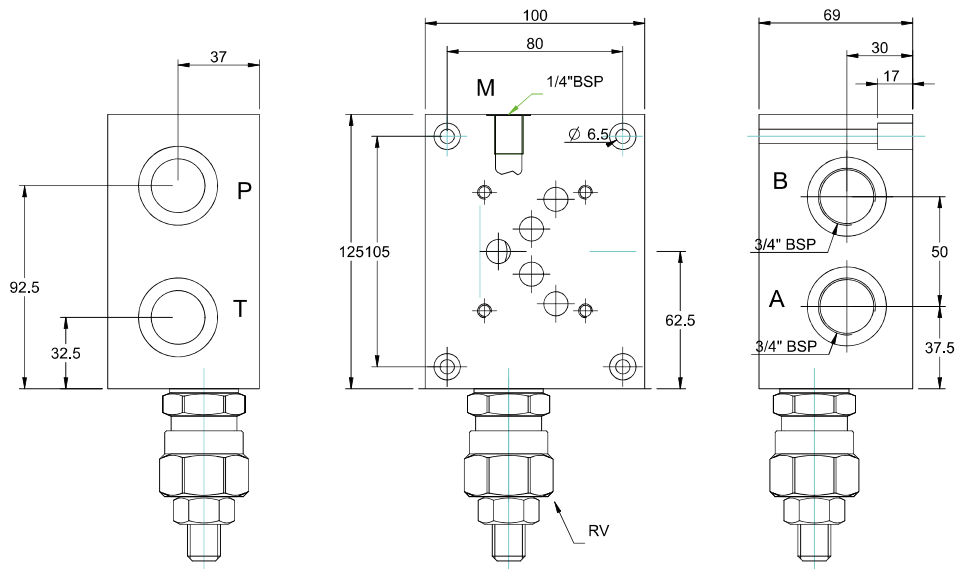


CETOP 5 - NG 10

03

BASE CON COLLEGAMENTO P - T - A - B LATERALI
SINGLE SUBPLATE ON SIDE P - T - A - B PORTS



Versione standard in alluminio
Standard type with aluminium

Pressione massima di lavoro = 250 bar
Max working pressure = 250 bar

Caratteristiche valvola di massima
vedere a pagina 64
For further information regarding relief
valve please see page 64

Esempio codice di ordinazione - *Ordering example*

BSA 10 # LL # - # — 10 = (35-100 bar)
20 = (80-250 bar)

Base in alluminio
Aluminium subplate

CETOP 5 - NG 10

C = (P - T - A - B) G1/2
D = (P - T - A - B) G3/4

z = predisposta per valvole
machined for relief valve
x = con valvola di max
with built-in relief valve

(P - T - A - B) laterali
(P - T - A - B) on side