

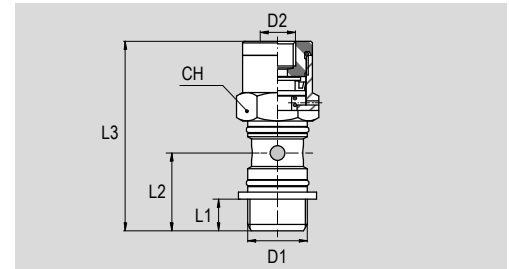
# Accessories with integrated function

## Stop valves



### Main features

Type	Description	Symbol
V45..U	Uni-directional stop valve. In nickel-plated brass.	
V45..B	Bi-directional stop valve. In nickel-plated brass.	



### Dimensions

Code	Item	Symbol	D1	D2	L1	L2	L3	CH	Weight (g)
030133	V450018U		G1/8"	M5x0,8	6,2	15,5	42,8	13	24
030123	V450014U		G1/4"	M5x0,8	8,2	18,3	47,5	17	46
030124	V450038U		G3/8"	G1/8"	9,2	21	55	20	77,5
030134	V450012U		G1/2"	G1/8"	10,5	25	61,5	25	138,5
030135	V450018B		G1/8"	M5x0,8	6,2	15,5	42,8	13	24
030136	V450014B		G1/4"	M5x0,8	8,2	18,3	47,5	17	46
030137	V450038B		G3/8"	G1/8"	9,2	21	55	20	77,5
030138	V450012B		G1/2"	G1/8"	10,5	25	61,5	25	138,5

### Technical data

Type	V45									
Size	1/8"			1/4"			3/8"		1/2"	
Fluid	Filtered compressed air with or without lubrication									
Pressure range	0 ÷ 10 bar									
Piloting pressure range	See page 4.127.11									
Temperature range	-20°C ÷ +80°C									
Parallel threads	UNI - ISO 228 / 1 (BSP)									
Function	See page 4.127.11									
Matching with banjo fittings	See page 4.127.12									
Flow at 6 bar with ΔP 1 bar	Uni-directional	170 NI/min			345 NI/min			700 NI/min		1.050 NI/min
	Bi-directional	440 NI/min			660 NI/min			965 NI/min		1.450 NI/min

### Standard materials

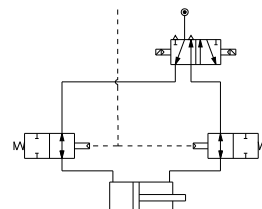
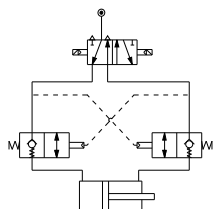
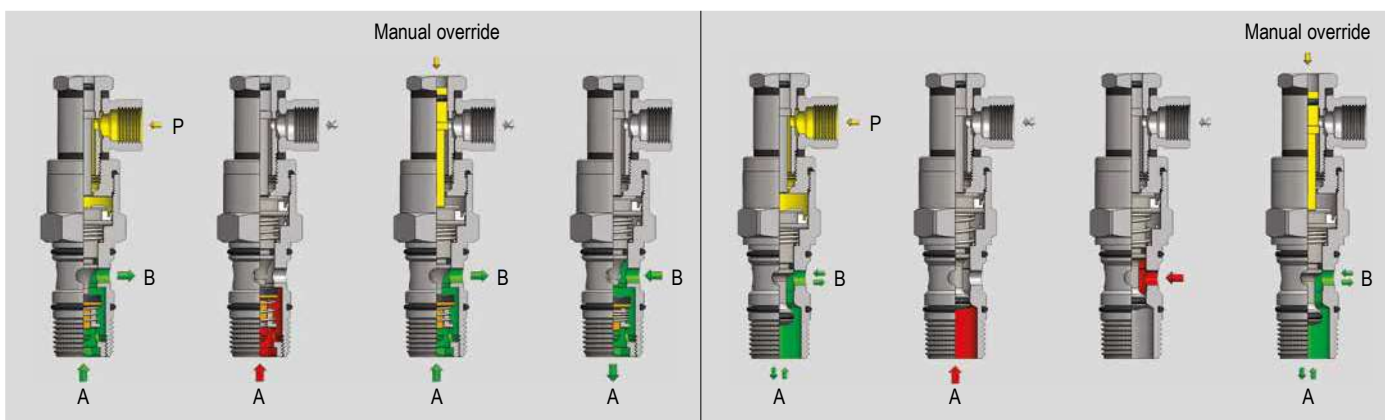
Type	V45								
Body	Nickel-plated brass								
Piston	Stainless Steel AISI 304								
Spring	Stainless Steel AISI 302								
Washer	PA6								
Seals	NBR - Polyurethane (PU)								

### Function (with K option)

Type V45..U  
(Uni-directional)



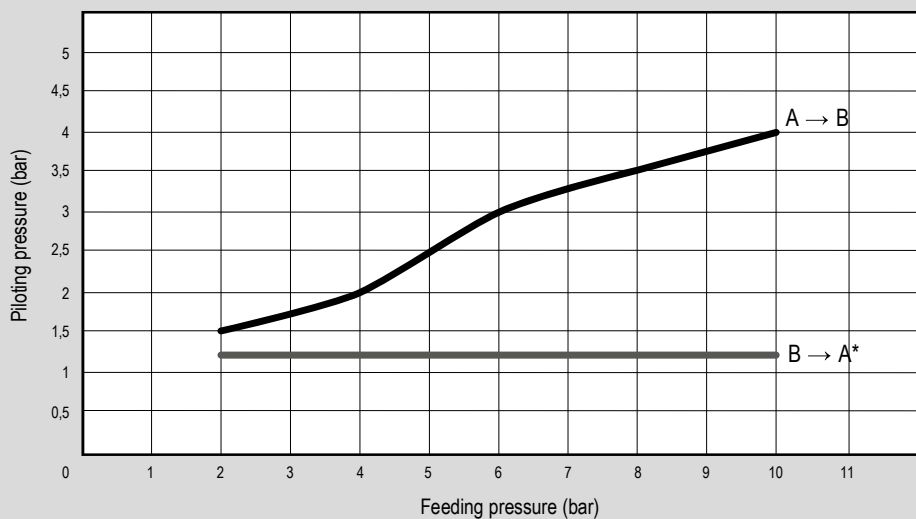
Type V45..B  
(Bi-directional)



Series of stop valves available in uni-directional and bi-directional versions. When mounted in pairs on a cylinder, they block the movement in the event of a sudden drop in piloting pressure.


By means of the manual release device (with option K, available on request) it is possible to manually reset the piston stroke.

### Piloting pressure in function of feeding pressure




\*Only for bi-directional versions (type V45..B)

Matching with banjo series R




Code	Item	For thread	Tube ext.Ø
020733	R 35 04 18	1/8"	4
020736	R 35 06 18	1/8"	6
020737	R 35 06 14	1/4"	6
020738	R 35 08 18	1/8"	8
020739	R 35 08 14	1/4"	8
020740	R 35 08 38	3/8"	8
020741	R 35 10 14	1/4"	10
020742	R 35 10 38	3/8"	10
020743	R 35 12 38	3/8"	12
020744	R 35 12 12	1/2"	12

Matching with banjo series RT




Code	Item	For thread	Tube ext.Ø
029392	RT 28 04 18	1/8"	4
029393	RT 28 06 18	1/8"	6
029394	RT 28 06 14	1/4"	6
029395	RT 28 08 18	1/8"	8
029396	RT 28 08 14	1/4"	8
029397	RT 28 08 38	3/8"	8
029398	RT 28 10 14	1/4"	10
029399	RT 28 10 38	3/8"	10

Matching with banjo series C




Code	Item	For thread	Tube ext.Ø
021318	C 23 04 18	1/8"	4
021303	C 23 05 18	1/8"	5
021306	C 23 06 18	1/8"	6
021307	C 23 06 14	1/4"	6
021308	C 23 08 18	1/8"	8
021309	C 23 08 14	1/4"	8
021310	C 23 08 38	3/8"	8
021311	C 23 10 14	1/4"	10
021312	C 23 10 38	3/8"	10

Matching with banjo series O




Code	Item	For thread	Tube ext.Ø
022056	O 25 06 18	1/8"	6
022057	O 25 06 14	1/4"	6
022058	O 25 08 18	1/8"	8
022059	O 25 08 14	1/4"	8

Matching with banjo series A




Code	Item	For thread	Thread
022871	A042 18 18	1/8"	1/8"
022872	A042 14 14	1/4"	1/4"
022873	A042 38 38	3/8"	3/8"
022874	A042 12 12	1/2"	1/2"

Matching with stud push-in fittings type R12



Code	Item	Valve size
020031	R 12 04 M5	1/8"-1/4"
020051	R 12 06 M5	1/8"-1/4"
020037	R 12 06 18	3/8"-1/2"
020039	R 12 08 18	3/8"-1/2"

Matching with elbow push-in fittings type R41



Code	Item	Valve size
020191	R 41 04 M5	1/8"-1/4"
020211	R 41 06 M5	1/8"-1/4"
020196	R 41 06 18	3/8"-1/2"
020198	R 41 08 18	3/8"-1/2"