



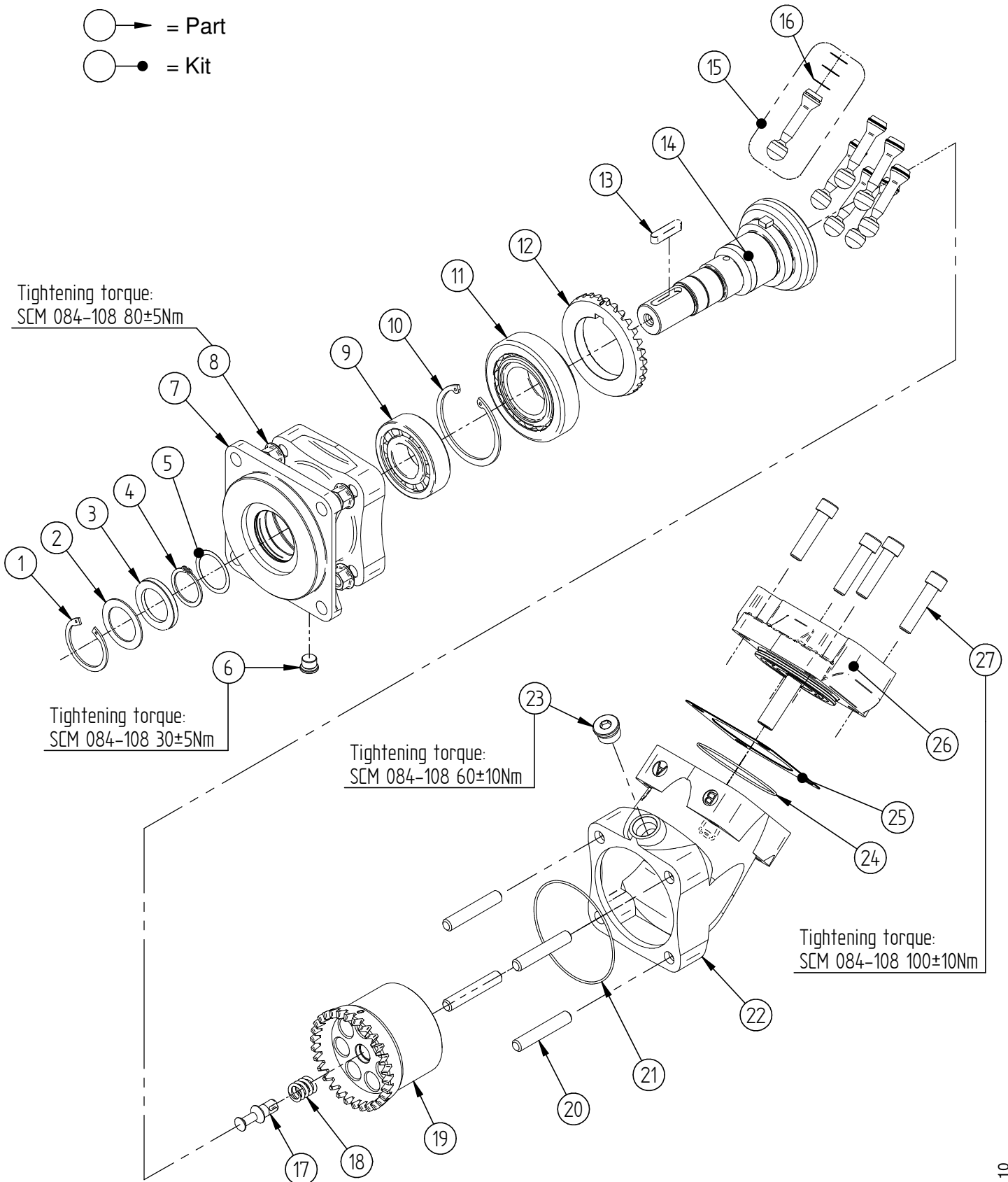


Contents

Exploded view.....	3
SCM 084 SAE.....	4
SCM 090 SAE.....	5
SCM 108 SAE.....	6
SEAL KITS.....	7



○ → = Part
○ ● = Kit





SCM 084 SAE C

Item	Part No.	Title	Type*	Qty.
1	91923	Lock ring		1
2	30007	Washer		1
3	91630	Shaft seal	N - Nitrile	1
3	91722	Shaft seal	H - Nitrile, High pressure	1
3	91825	Shaft seal	V - Viton, High temperature	1
3	92293	Shaft seal	P - FPM, High temp./pressure	1
4	90780	Lock ring		1
5	50614	Shim		1
6	91728	Plug		1
7	30001	Bearing housing	SC4 - SAE C 4-Hole	1
8	90820	Nut		4
9	91727	Roller bearing		1
10	91277	Lock ring		1
11	91604	Tapered roller bearing		1
12	20047	Gear ring	Straight gears	1
13	91726	Key		1
14	50466	Shaft	C14 - Spline 14T 12/24	1
14	50818	Shaft	C21 - Spline 21T 16/32	1
14	50467	Shaft	C32 - Key Ø31,7mm	1
15	50283	Piston		7
16	20034	Piston rings		21
17	21047	Spring pin		1
18	92060	Spring		1
19	21040	Cylinder barrel	Straight gears	1
20	20069	Stud bolt		4
21	91613	O-ring		1
22	30006	Angular housing		1
23	91735	Plug		1
24	91681	O-ring		1
25	20060	Shim		1
26	30015	Connection Cover	S1U	1
26	30572	Connection Cover	V1U	1
26	30582	Connection Cover	V2U	1
26	30592	Connection Cover	R1U	1
26	30242	Connection Cover	S1M	1
26	30337	Connection Cover	V1M	1
26	30359	Connection Cover	V2M	1
26	30332	Connection Cover	R1M	1
27	90922	Bolt		4

*For different types, see datasheet at <http://www.sunfab.com> or contact Sunfab



SCM 090 SAE C

Item	Part No.	Title	Type*	Qty.
1	91923	Lock ring		1
2	30007	Washer		1
3	91630	Shaft seal	N - Nitrile	1
3	91722	Shaft seal	H - Nitrile, High pressure	1
3	91825	Shaft seal	V - Viton, High temperature	1
3	92293	Shaft seal	P - FPM, High temp./pressure	1
4	90780	Lock ring		1
5	50614	Shim		1
6	91728	Plug		1
7	30001	Bearing housing	SC4 - SAE C 4-Hole	1
8	90820	Nut		4
9	91727	Roller bearing		1
10	91277	Lock ring		1
11	91604	Tapered roller bearing		1
12	20047	Gear ring	Straight gears	1
13	91726	Key		1
14	50466	Shaft	C14 - Spline 14T 12/24	1
14	50818	Shaft	C21 - Spline 21T 16/32	1
14	50467	Shaft	C32 - Key Ø31,7mm	1
15	50636	Piston		7
16	30095	Piston rings		21
17	21047	Spring pin		1
18	92060	Spring		1
19	21041	Cylinder barrel	Straight gears	1
20	20069	Stud bolt		4
21	91613	O-ring		1
22	30006	Angular housing		1
23	91735	Plug		1
24	91681	O-ring		1
25	20060	Shim		1
26	30155	Connection Cover	S1U	1
26	30573	Connection Cover	V1U	1
26	30583	Connection Cover	V2U	1
26	30593	Connection Cover	R1U	1
26	30449	Connection Cover	S1M	1
26	30447	Connection Cover	V1M	1
26	30402	Connection Cover	V2M	1
26	30457	Connection Cover	R1M	1
27	90922	Bolt		4

*For different types, see datasheet at <http://www.sunfab.com> or contact Sunfab



SCM 108 SAE C

Item	Part No.	Title	Type*	Qty.
1	91923	Lock ring		1
2	30007	Washer		1
3	91630	Shaft seal	N - Nitrile	1
3	91722	Shaft seal	H - Nitrile, High pressure	1
3	91825	Shaft seal	V - Viton, High temperature	1
3	92293	Shaft seal	P - FPM, High temp./pressure	1
4	90780	Lock ring		1
5	50614	Shim		1
6	91728	Plug		1
7	30001	Bearing housing	SC4 - SAE C 4-Hole	1
8	90820	Nut		4
9	91727	Roller bearing		1
10	91277	Lock ring		1
11	91604	Tapered roller bearing		1
12	20047	Gear ring	Straight gears	1
13	91726	Key		1
14	50466	Shaft	C14 - Spline 14T 12/24	1
14	50818	Shaft	C21 - Spline 21T 16/32	1
14	50467	Shaft	C32 - Key Ø31,7mm	1
15	50284	Piston		7
16	20035	Piston rings		21
17	21047	Spring pin		1
18	92060	Spring		1
19	21042	Cylinder barrel	Straight gears	1
20	20069	Stud bolt		4
21	91613	O-ring		1
22	30006	Angular housing		1
23	91735	Plug		1
24	91681	O-ring		1
25	20060	Shim		1
26	30014	Connection Cover	S1U	1
26	30574	Connection Cover	V1U	1
26	30584	Connection Cover	V2U	1
26	30594	Connection Cover	R1U	1
26	30244	Connection Cover	S1M	1
26	30339	Connection Cover	V1M	1
26	30413	Connection Cover	V2M	1
26	30334	Connection Cover	R1M	1
27	90922	Bolt		4

*For different types, see datasheet at <http://www.sunfab.com> or contact Sunfab



SCM 084-108 SAE C Seal Kits

Part No.	Includes Items	Title	Type*
50542	1, 2, 3	Shaft seal kit	N - Nitrile
50543	1, 2, 3	Shaft seal kit	H - Nitrile, High pressure
50544	1, 2, 3	Shaft seal kit	V - Viton, High temperature
50965	1, 2, 3	Shaft seal kit	P - FPM, High temp./pressure
50456	1, 2, 3, 21, 24, 25	Seal kit	N - Nitrile
50458	1, 2, 3, 21, 24, 25	Seal kit	H - Nitrile, High pressure
50457	1, 2, 3, 21, 24, 25	Seal kit	V - Viton, High temperature
50993	1, 2, 3, 21, 24, 25	Seal kit	P - FPM, High temp./pressure

*For different types, see datasheet at <http://www.sunfab.com> or contact Sunfab