

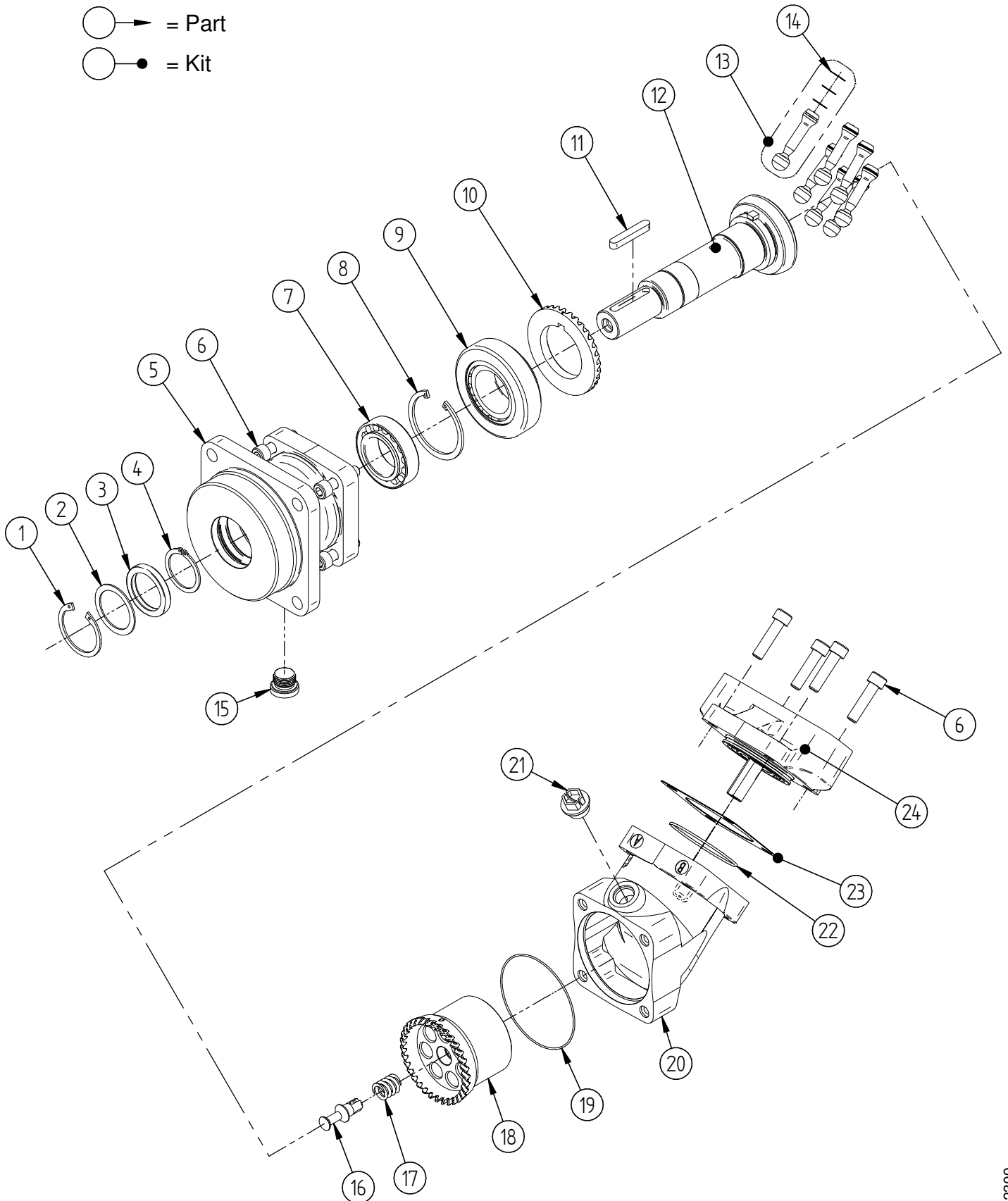


Contents

Exploded view.....	3
SCM 010 ISO.....	4
SCM 012 ISO.....	5
SCM 017 ISO.....	6
SCM 025 ISO.....	7
SCM 034 ISO.....	8
SCM 040 ISO.....	9
SCM 047 ISO.....	10
SCM 056 ISO.....	11
SCM 064 ISO	12
SEAL KITS.....	13



○ → = Part
○ ● = Kit





SCM 010 ISO

Item	Part No.	Title	Type*	Qty.
1	91923	Lock ring		1
2	30007	Washer		1
3	91630	Shaft seal	N - Nitrile	1
3	91722	Shaft seal	H - Nitrile, High pressure	1
3	91825	Shaft seal	V - Viton, High temperature	1
3	92293	Shaft seal	P - FPM, High temp./pressure	1
4	90780	Lock ring		1
5	30216	Bearing housing	I41 - ISO 4-Hole	1
6	91667	Bolt		8
7	91938	Tapered roller bearing		1
8	90877	Lock ring		1
9	91666	Tapered roller bearing		1
10	20086	Gear ring		1
11	91944	Key	For K20 shaft	1
12	50745	Shaft	W20 - Spline W20x1.25x14x9g	1
12	50746	Shaft	K20 - Key Ø20	1
13	50254	Piston		5
14	30483	Piston rings		15
15	91109	Plug		1
16	21098	Spring pin		1
17	92078	Spring		1
18	20754	Cylinder barrel		1
19	91664	O-ring		1
20	30230	Angular housing		1
21	91372	Plug		1
22	91665	O-ring		1
23	20094	Shim		1
24	30492	Connection Cover	S3G	1
24	30480	Connection Cover	K3G	1
24	30494	Connection Cover	S3U	1

*For different types, see datasheet at <http://www.sunfab.com> or contact Sunfab



SCM 012 ISO

Item	Part No.	Title	Type*	Qty.
1	91923	Lock ring		1
2	30007	Washer		1
3	91630	Shaft seal	N - Nitrile	1
3	91722	Shaft seal	H - Nitrile, High pressure	1
3	91825	Shaft seal	V - Viton, High temperature	1
3	92293	Shaft seal	P - FPM, High temp./pressure	1
4	90780	Lock ring		1
5	30216	Bearing housing	I41 - ISO 4-Hole	1
6	91667	Bolt		8
7	91938	Tapered roller bearing		1
8	90877	Lock ring		1
9	91666	Tapered roller bearing		1
10	20086	Gear ring		1
11	91944	Key	For K20 shaft	1
11	91945	Key	For K25 shaft	1
12	50745	Shaft	W20 - Spline W20x1.25x14x9g	1
12	50743	Shaft	W25 - Spline W25x1.25x18x9g	1
12	50746	Shaft	K20 - Key Ø20	1
12	50744	Shaft	K25 - Key Ø25	1
13	50279	Piston		5
14	20096	Piston rings		15
15	91109	Plug		1
16	21098	Spring pin		1
17	92078	Spring		1
18	21033	Cylinder barrel		1
19	91664	O-ring		1
20	30230	Angular housing		1
21	91372	Plug		1
22	91665	O-ring		1
23	20094	Shim		1
24	30054	Connection Cover	S3U	1
24	30053	Connection Cover	S3G	1
24	30281	Connection Cover	K3G	1

*For different types, see datasheet at <http://www.sunfab.com> or contact Sunfab



SCM 017 ISO

Item	Part No.	Title	Type*	Qty.
1	91923	Lock ring		1
2	30007	Washer		1
3	91630	Shaft seal	N - Nitrile	1
3	91722	Shaft seal	H - Nitrile, High pressure	1
3	91825	Shaft seal	V - Viton, High temperature	1
3	92293	Shaft seal	P - FPM, High temp./pressure	1
4	90780	Lock ring		1
5	30216	Bearing housing	I41 - ISO 4-Hole	1
6	91667	Bolt		8
7	91938	Tapered roller bearing		1
8	90877	Lock ring		1
9	91666	Tapered roller bearing		1
10	20086	Gear ring		1
11	91944	Key	For K20 shaft	1
11	91945	Key	For K25 shaft	1
12	50745	Shaft	W20 - Spline W20x1.25x14x9g	1
12	50743	Shaft	W25 - Spline W25x1.25x18x9g	1
12	50746	Shaft	K20 - Key Ø20	1
12	50744	Shaft	K25 - Key Ø25	1
13	50280	Piston		5
14	20095	Piston rings		15
15	91109	Plug		1
16	21098	Spring pin		1
17	92078	Spring		1
18	21034	Cylinder barrel		1
19	91664	O-ring		1
20	30230	Angular housing		1
21	91372	Plug		1
22	91665	O-ring		1
23	20094	Shim		1
24	30056	Connection Cover	S3U	1
24	30055	Connection Cover	S3G	1
24	30283	Connection Cover	K3G	1

*For different types, see datasheet at <http://www.sunfab.com> or contact Sunfab



SCM 025 ISO

Item	Part No.	Title	Type*	Qty.
1	91923	Lock ring		1
2	30007	Washer		1
3	91630	Shaft seal	N - Nitrile	1
3	91722	Shaft seal	H - Nitrile, High pressure	1
3	91825	Shaft seal	V - Viton, High temperature	1
3	92293	Shaft seal	P - FPM, High temp./pressure	1
4	90780	Lock ring		1
5	30217	Bearing housing	I42 - ISO 4-Hole	1
6	91667	Bolt		8
7	91938	Tapered roller bearing		1
8	90877	Lock ring		1
9	91666	Tapered roller bearing		1
10	20086	Gear ring		1
11	91946	Key	For K25 & K30 shaft	1
12	50749	Shaft	W25 - Spline W25x1.25x18x9g	1
12	50747	Shaft	W30 - Spline W30x2x14x9g	1
12	50750	Shaft	K25 - Key Ø25	1
12	50748	Shaft	K30 - Key Ø30	1
13	50279	Piston		7
14	20096	Piston rings		21
15	91109	Plug		1
16	21047	Spring pin		1
17	92060	Spring		1
18	21035	Cylinder barrel		1
19	91664	O-ring		1
20	30230	Angular housing		1
21	91372	Plug		1
22	91665	O-ring		1
23	20094	Shim		1
24	30058	Connection Cover	S3U	1
24	30576	Connection Cover	V2U	1
24	30586	Connection Cover	R1U	1
24	30057	Connection Cover	S3G	1
24	30286	Connection Cover	K3G	1
24	30445	Connection Cover	V2M	1
24	30108	Connection Cover	R1M	1
24	31504	Connection Cover	S2U	1
24	30373	Connection Cover	S2M	1

*For different types, see datasheet at <http://www.sunfab.com> or contact Sunfab



SCM 034 ISO

Item	Part No.	Title	Type*	Qty.
1	91923	Lock ring		1
2	30007	Washer		1
3	91630	Shaft seal	N - Nitrile	1
3	91722	Shaft seal	H - Nitrile, High pressure	1
3	91825	Shaft seal	V - Viton, High temperature	1
3	92293	Shaft seal	P - FPM, High temp./pressure	1
4	90780	Lock ring		1
5	30217	Bearing housing	I42 - ISO 4-Hole	1
6	91667	Bolt		8
7	91938	Tapered roller bearing		1
8	90877	Lock ring		1
9	91666	Tapered roller bearing		1
10	20086	Gear ring		1
11	91946	Key	For K25 & K30 shaft	1
12	50749	Shaft	W25 - Spline W25x1.25x18x9g	1
12	50747	Shaft	W30 - Spline W30x2x14x9g	1
12	50750	Shaft	K25 - Key Ø25	1
12	50748	Shaft	K30 - Key Ø30	1
13	50280	Piston		7
14	20095	Piston rings		21
15	91109	Plug		1
16	21047	Spring pin		1
17	92060	Spring		1
18	21036	Cylinder barrel		1
19	91664	O-ring		1
20	30230	Angular housing		1
21	91372	Plug		1
22	91665	O-ring		1
23	20094	Shim		1
24	30060	Connection Cover	S3U	1
24	30577	Connection Cover	V2U	1
24	30587	Connection Cover	R1U	1
24	30059	Connection Cover	S3G	1
24	30288	Connection Cover	K3G	1
24	30423	Connection Cover	V2M	1
24	30109	Connection Cover	R1M	1
24	31505	Connection Cover	S2U	1
24	30376	Connection Cover	S2M	1

*For different types, see data sheet at <http://www.sunfab.com> or contact Sunfab



SCM 040 ISO

Item	Part No.	Title	Type*	Qty.
1	91923	Lock ring		1
2	30084	Washer		1
3	92089	Shaft seal	N - Nitrile	1
3	91739	Shaft seal	H - Nitrile, High pressure	1
3	91983	Shaft seal	V - Viton, High temperature	1
3	92294	Shaft seal	P - FPM, High temp./pressure	1
4	92052	Lock ring		1
5	30440	Bearing housing	I43 - ISO 4-Hole	1
6	91617	Bolt		8
7	92037	Tapered roller bearing		1
8	91951	Lock ring		1
9	91129	Tapered roller bearing		1
10	20046	Gear ring	Straight gears**	1
11	91949	Key	For K30 shaft	1
11	91947	Key	For K35 shaft	1
12	50755	Shaft	W30 - Spline W30x2x14x9g	1
12	50753	Shaft	W32 - Spline W32x2x14x9g	1
12	50751	Shaft	W35 - Spline W35x2x16x9g	1
12	50754	Shaft	K30 - Key Ø30	1
12	50752	Shaft	K35 - Key Ø35	1
13	50275	Piston		7
14	20095	Piston rings		21
15	91109	Plug		1
16	21047	Spring pin		1
17	92060	Spring		1
18	21094	Cylinder barrel	Straight gears**	1
19	91708	O-ring		1
20	30231	Angular housing		1
21	91372	Plug		1
22	91653	O-ring		1
23	20058	Shim		1
24	30459	Connection Cover	S2U	1
24	30122	Connection Cover	S2M	1
24	30111	Connection Cover	V2M	1
24	30578	Connection Cover	V2U	1
24	30114	Connection Cover	R1M	1
24	30588	Connection Cover	R1U	1

*For different types, see datasheet at <http://www.sunfab.com> or contact Sunfab

**NOTE: If the motor has helical gears both item 10 & 18 needs to be replaced to parts with straight gears



SCM 047 ISO

Item	Part No.	Title	Type*	Qty.
1	91923	Lock ring		1
2	30084	Washer		1
3	92089	Shaft seal	N - Nitrile	1
3	91739	Shaft seal	H - Nitrile, High pressure	1
3	91983	Shaft seal	V - Viton, High temperature	1
3	92294	Shaft seal	P - FPM, High temp./pressure	1
4	92052	Lock ring		1
5	30440	Bearing housing	I43 - ISO 4-Hole	1
6	91617	Bolt		8
7	92037	Tapered roller bearing		1
8	91951	Lock ring		1
9	91129	Tapered roller bearing		1
10	20335	Gear ring	Helical gears	1
10	20046	Gear ring	Straight gears	1
11	91949	Key	For K30 shaft	1
11	91947	Key	For K35 shaft	1
12	50755	Shaft	W30 - Spline W30x2x14x9g	1
12	50753	Shaft	W32 - Spline W32x2x14x9g	1
12	50751	Shaft	W35 - Spline W35x2x16x9g	1
12	50754	Shaft	K30 - Key Ø30	1
12	50752	Shaft	K35 - Key Ø35	1
13	50281	Piston		7
14	20032	Piston rings		21
15	91109	Plug		1
16	21047	Spring pin		1
17	92060	Spring		1
18	21095	Cylinder barrel	Straight gears	1
19	91708	O-ring		1
20	30231	Angular housing		1
21	91372	Plug		1
22	91653	O-ring		1
23	20058	Shim		1
24	30061	Connection Cover	S2U	1
24	30222	Connection Cover	S2M	1
24	30252	Connection Cover	V2M	1
24	30578	Connection Cover	V2U	1
24	30291	Connection Cover	R1M	1
24	30588	Connection Cover	R1U	1

*For different types, see datasheet at <http://www.sunfab.com> or contact Sunfab



SCM 056 ISO

Item	Part No.	Title	Type*	Qty.
1	91923	Lock ring		1
2	30084	Washer		1
3	92089	Shaft seal	N - Nitrile	1
3	91739	Shaft seal	H - Nitrile, High pressure	1
3	91983	Shaft seal	V - Viton, High temperature	1
3	92294	Shaft seal	P - FPM, High temp./pressure	1
4	92052	Lock ring		1
5	30440	Bearing housing	K3 - ISO 4-Hole	1
6	91617	Bolt		8
7	92037	Tapered roller bearing		1
8	91951	Lock ring		1
9	91129	Tapered roller bearing		1
10	20046	Gear ring	Straight gears**	1
11	91949	Key	For K30 shaft	1
11	91947	Key	For K35 shaft	1
12	50755	Shaft	W30 - Spline W30x2x14x9g	1
12	50753	Shaft	W32 - Spline W32x2x14x9g	1
12	50751	Shaft	W35 - Spline W35x2x16x9g	1
12	50754	Shaft	K30 - Key Ø30	1
12	50752	Shaft	K35 - Key Ø35	1
13	50289	Piston		7
14	20402	Piston rings		21
15	91109	Plug		1
16	21047	Spring pin		1
17	92060	Spring		1
18	21096	Cylinder barrel	Straight gears**	1
19	91708	O-ring		1
20	30231	Angular housing		1
21	91372	Plug		1
22	91653	O-ring		1
23	20058	Shim		1
24	30467	Connection Cover	S2U	1
24	30343	Connection Cover	S2M	1
24	30345	Connection Cover	V2M	1
24	30578	Connection Cover	V2U	1
24	30347	Connection Cover	R1M	1
24	30588	Connection Cover	R1U	1

*For different types, see datasheet at <http://www.sunfab.com> or contact Sunfab

**NOTE: If the motor has helical gears both item 10 & 18 needs to be replaced to parts with straight gears



SCM 064 ISO

Item	Part No.	Title	Type*	Qty.
1	91923	Lock ring		1
2	30084	Washer		1
3	92089	Shaft seal	N - Nitrile	1
3	91739	Shaft seal	H - Nitrile, High pressure	1
3	91983	Shaft seal	V - Viton, High temperature	1
3	92294	Shaft seal	P - FPM, High temp./pressure	1
4	92052	Lock ring		1
5	30440	Bearing housing	I43 - ISO 4-Hole	1
6	91617	Bolt		8
7	92037	Tapered roller bearing		1
8	91951	Lock ring		1
9	91129	Tapered roller bearing		1
10	20046	Gear ring	Straight gears**	1
11	91949	Key	For K30 shaft	1
11	91947	Key	For K35 shaft	1
12	50755	Shaft	W30 - Spline W30x2x14x9g	1
12	50753	Shaft	W32 - Spline W32x2x14x9g	1
12	50751	Shaft	W35 - Spline W35x2x16x9g	1
12	50754	Shaft	K30 - Key Ø30	1
12	50752	Shaft	K35 - Key Ø35	1
13	50282	Piston		7
14	20033	Piston rings		21
15	91109	Plug		1
16	21047	Spring pin		1
17	92060	Spring		1
18	21097	Cylinder barrel	Straight gears**	1
19	91708	O-ring		1
20	30231	Angular housing		1
21	91372	Plug		1
22	91653	O-ring		1
23	20058	Shim		1
24	30062	Connection Cover	S2U	1
24	30224	Connection Cover	S2M	1
24	30255	Connection Cover	V2M	1
24	30578	Connection Cover	V2U	1
24	30293	Connection Cover	R1M	1
24	30588	Connection Cover	R1U	1

*For different types, see datacheet at <http://www.sunfab.com> or contact Sunfab

**NOTE: If the motor has helical gears both item 10 & 18 needs to be replaced to parts with straight gears



SCM 010-064 ISO Seal Kits

Part No.	Includes Items	Title	Type*
50542	1, 2, 3	Shaft seal kit SCM 010-034 ISO	N - Nitrile
50543	1, 2, 3	Shaft seal kit SCM 010-034 ISO	H - Nitrile, High pressure
50544	1, 2, 3	Shaft seal kit SCM 010-034 ISO	V - Viton, High temperature
50965	1, 2, 3	Shaft seal kit SCM 010-034 ISO	P - FPM, High temp./pressure
50765	1, 2, 3	Shaft seal kit SCM 040-064 ISO	N - Nitrile
50766	1, 2, 3	Shaft seal kit SCM 040-064 ISO	H - Nitrile, High pressure
50767	1, 2, 3	Shaft seal kit SCM 040-064 ISO	V - Viton, High temperature
50983	1, 2, 3	Shaft seal kit SCM 040-064 ISO	P - FPM, High temp./pressure
50547	1, 2, 3, 15, 19, 22, 23	Seal kit SCM 010-034 ISO	N - Nitrile
50548	1, 2, 3, 15, 19, 22, 23	Seal kit SCM 010-034 ISO	H - Nitrile, High pressure
50549	1, 2, 3, 15, 19, 22, 23	Seal kit SCM 010-034 ISO	V - Viton, High temperature
50984	1, 2, 3, 15, 19, 22, 23	Seal kit SCM 010-034 ISO	P - FPM, High temp./pressure
50762	1, 2, 3, 15, 19, 22, 23	Seal kit SCM 040-064 ISO	N - Nitrile
50763	1, 2, 3, 15, 19, 22, 23	Seal kit SCM 040-064 ISO	H - Nitrile, High pressure
50764	1, 2, 3, 15, 19, 22, 23	Seal kit SCM 040-064 ISO	V - Viton, High temperature
50985	1, 2, 3, 15, 19, 22, 23	Seal kit SCM 040-064 ISO	P - FPM, High temp./pressure

*For different types, see datasheet at <http://www.sunfab.com> or contact Sunfab