

Couplings & Adapters

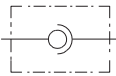
Rotary coupling

Technical specifications are measured with mineral oil ISO VG32 at 50°C (122°F) temperature.

GGIL - GG90									
	01	02	03	04	05	06	07	09	
Max. flow	25 l/min (6.6 US gpm)	45 l/min (11.9 US gpm)	80 l/min (21.1 US gpm)	120 l/min (31.7 US gpm)	150 l/min (39.6 US gpm)	200 l/min (52.8 US gpm)	250 l/min (66 US gpm)	300 l/min (79.3 US gpm)	
Max. pressure	400 bar (5800 psi)	400 bar (5800 psi)	360 bar (5200 psi)	310 bar (1500 psi)	280 bar (5800 psi)	250 bar (3600 psi)	210 bar (3050 psi)	180 bar (2600 psi)	
Fluid	mineral based oil								
Viscosity	from 10 to 200 cSt								
Max. level of contamination	18/16/13 ISO4406								
Fluid temperature	with NBR seals from -20°C (-4°F) to 80°C (176°F)								
Environmental temp. for working conditions	from -40°C (-40°F) to 100°C (212°F)								
Material	zinc plated steel								
Max. rotation speed	500 rpm	400 rpm	370 rpm	280 rpm	230 rpm	200 rpm	170 rpm	140 rpm	
Weight	GGIL	0.21 kg (0.463 lb)	0.30 kg (0.661 lb)	0.33 kg (0.106 lb)	0.54 kg (0.728 lb)	1.03 kg (2.27 lb)	1.14 kg (2.51 lb)	1.68 kg (3.70 lb)	2.52 kg (5.56 lb)
	GG90	0.28 kg (0.617 lb)	0.40 kg (0.882 lb)	0.55 kg (1.21 lb)	1.05 kg (2.31 lb)	1.45 kg (3.20 lb)	1.83 kg (4.03 lb)	3.00 kg (6.61 lb)	3.54 kg (7.80 lb)

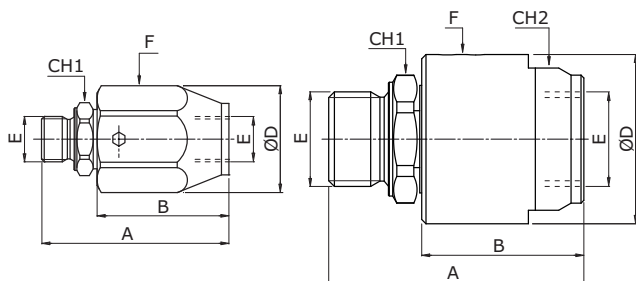
NOTE - For different conditions and thread, please contact Walvoil Sales Dpt.

GGIL coupling



from 01 to 04

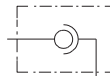
from 05 to 09



Dimensions are in mm-in

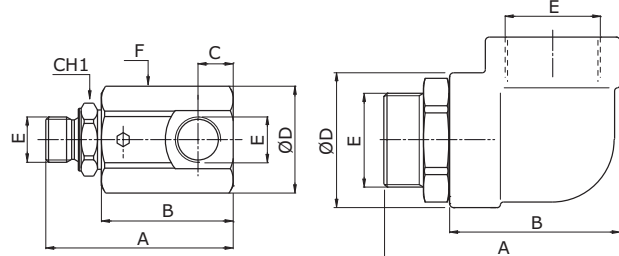
Coupling type	A	B	ØD	E	F	CH1	CH2	Ordering code
GGIL01	63 2.48	42 1.65	33 1.30	G1/4	∅30	19	/	1800010100
GGIL02	66 2.60	45 1.77	37 1.46	G3/8	∅34	24	/	1800020100
GGIL03	73 2.87	50 1.97	40 1.57	G1/2	∅36	27	/	1800030100
GGIL04	80 3.15	50 1.97	49 1.93	G3/4	∅45	34	/	1800040100
GGIL05	90 3.54	57 2.24	60 2.36	G1"	∅60 ∅2.36	41	50	1800050100
GGIL06	98 3.86	63 2.48	60 2.36	G1"1/4	∅60 ∅2.36	50	55	1800060100
GGIL07	107 4.21	70 2.76	70 2.76	G1"1/2	∅70 ∅2.76	55	65	1800070100
GGIL09	112 4.41	75 2.95	80 3.15	G2"	∅80 ∅3.15	70	75	1800090100

GG90 coupling



from 01 to 05

from 06 to 09



Dimensions are in mm-in

Coupling type	A	B	C	ØD	E	F	CH1	Ordering code
GG9001	71 2.80	72 2.83	11 0.433	33 1.30	G1/4	∅30	19	1800510100
GG9002	77 3.03	76.5 3.01	15 0.591	37 1.46	G3/8	∅34	24	1800520100
GG9003	86 3.39	87 3.43	17 0.669	40 1.57	G1/2	∅38	27	1800530100
GG9004	100 3.94	99.5 3.92	19 0.748	49 1.93	G3/4	∅50	34	1800540100
GG9005	113 4.45	115.5 4.55	23 0.91	60 2.36	G1"	∅59.5 ∅2.43	41	1800550100
GG9006	118 4.65	123 4.84	32 1.26	63 2.48	G1"1/4	/	50	1800560100
GG9007	138 5.43	138 5.43	38 1.50	76 2.99	G1"1/2	/	55	1800570100
GG9009	152 5.98	152 5.98	43 1.69	85 3.35	G2"	/	70	1800590100